



RESIDENTIAL & LIGHT COMMERCIAL

# PRECAST INSULATED FOUNDATIONS & WALLS



## FEATURES

- Code accepted - factory insulated to meet 2015 Building Code
- Ready to finish - complete with chase holes for electrical & plumbing
- 15 Year factory warranty  
*See Limited Warranty Details*
- Custom designed system - designed to your specifications, sealed CAD drawings provided
- Constructed in controlled factory environment - third party inspected
- Constructed of 5,000+ PSI concrete - no additional dampproofing required
- Installed in hours & year-round

**(866) 699-2557**

Learn more at [www.northeastprecast.com](http://www.northeastprecast.com)





**SMALL HOMES**



**LARGE HOMES**



**RADIUS**



**PRECAST STEP UNITS**



**WALKOUT BASEMENTS**



**ABOVE GRADE WALLS FIRST LEVEL**



**ADDITIONS**



**BASEMENT UNDER GARAGE**



**SHORE HOMES**



**SLAB ON GRADE**



**ABOVE GRADE WALLS DOUBLE STACKED**



**ABOVE GRADE WALLS TRIPLE STACKED**



**SHOPPING PLAZAS**



**RESTAURANTS**



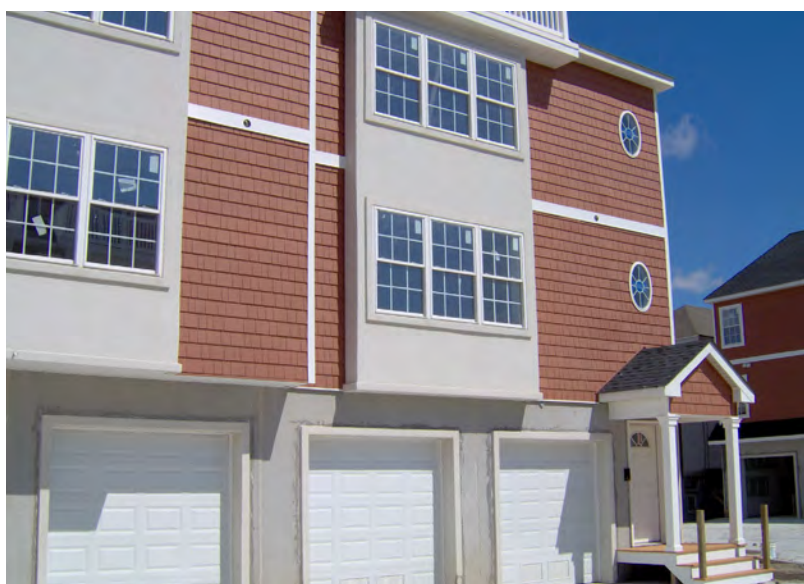
**OFFICE BUILDINGS**



**MAINTENANCE BUILDINGS**



**MULTI FAMILY RESIDENTIAL**



**MULTI FAMILY RESIDENTIAL**



*“It is my professional opinion that Superior Walls system is a time tested product that has been installed in a variety of environments and has been evaluated and approved with both the Canadian Construction materials Center (CCMC) and the International Code Council Evaluation Service (ICC-ES). Based on these evaluations and my professional experience with this product I can attest to the performance of the Superior Walls Foundation System.”*

Jack S. Smith, RA, Bishop & Smith Architects

## GREEN QUALITY

	<b>SUPERIOR WALLS</b>	<b>POURED WALLS</b>	<b>BLOCK WALLS</b>
NGBS Certified as a Green Product	✓	✗	✗
A component of LEED-H certification without additional expense	✓	✗	✗
A component of Energy Star certification without additional expense	✓	✗	✗
Complies, without additional expense, with IECC 2015 Energy Code: R10 continuous insulation in basement walls	✓	✗	✗
Recycled material in concrete (Superior Walls 15% Fly Ash)	✓	✗	✗
Lowest % of concrete used to obtain highest strength. Superior Walls is above 5,000 PSI using 70% less concrete than 10" thick poured wall.	✓	✗	✗
Warranty against side wall water penetration	✓	✗	✗
Cast in metal stud facers eliminates the need to frame out the exterior walls with wood	✓	✗	✗
Air quality is improved by preventing moist air penetration	✓	✗	✗
Reduces the possibility of mildew and mold	✓	✗	✗
Minimal job site clean up	✓	✗	✗
No additional building cost for finishing the external basement walls. Superior Walls is pre-studded, pre-insulated, with steel stud face and wiring chase holes prefabricated. Ready to finish!	✓	✗	✗
Air infiltration - minimal envelope leakage when used in above grade applications	✓	✗	✗
Enhanced insulation is a part of the wall without added expense / Exceeds IECC 2009 requirements for continuous insulation R-Value by more than 25% / Meets HERS grade 1 for insulation	✓	✗	✗
Off-site fabrication, prefabricated construction	✓	✗	✗
Recycling of residue materials from manufacturing procedure / concrete, steel, insulation	✓	✗	✗
Requires no emulsified oil coatings to be applied to the exterior of the wall and gaskets between the footings and the bottom of the foundation	✓	✗	✗



*“I’m very happy with my Superior Walls!!! Here is a pic of my home in Barnegat that sits about 300’ from the bay. The picture was taken the morning after Sandy came through. The water came up just over the flood vents and went back out. Very happy I did not use wood break away walls.”*

Scott Nevins, Homeowner



*“I will use Superior Walls from now on for all future projects. It is faster, better quality, easier and cheaper than conventional construction methods.”*

John Mirenda, Mirenda Construction

# INSTALLED IN HOURS

Xi, R12.5

**ZONE 4**  
COMPLIANT



## DRY

YOUR PERMANENT BARRIER AGAINST  
SIDEWALL WATER PENETRATION

- 1 Clean Crushed Stone Footing
- 2 Auxiliary Drain Pipe
- 3 Superior Sealant® Applied in All Joints for Permanent Moisture Barrier

## WARM

WARMER IN WINTER, COOLER IN SUMMER...  
REDUCES YOUR HOME'S ENERGY LOSS

- 4 2-1/2" Dow® Extruded Polystyrene Insulation
- 5 1" Foam Insulated Concrete Studs
- 6 1" Foam Insulation on Bond Beam

## SMART

READY TO FINISH...  
WITH PRE-ENGINEERED ACCESS BUILT-IN

- 7 Access Holes for Ease in Wiring and Plumbing
- 8 Galvanized Steel Stud Facing Ready for Drywall Finishing
- 9 CAD Custom-Designed to Virtually Any Architectural Style
- 10 Laser-Leveled to be Plumb, Level, Square
- 11 Installs on Your Site in Just Hours for Time and Money Savings

## SUPERIOR

CREATED IN A CONTROLLED FACTORY  
ENVIRONMENT TO ENSURE THAT YOUR  
NEW HOME'S FOUNDATION WILL BE BUILT  
TO THE INDUSTRY'S HIGHEST STANDARDS...

- 12 5,000+ PSI Concrete for Superior Strength
- 13 Horizontal Steel Rebar Inside Top and Bottom Beams
- 14 Steel Reinforced Top Bond Beam
- 15 Vertical Steel Rebar (Inside Each Stud)
- 16 1-3/4" Concrete Face Shell
- 17 10-1/4" Overall Wall Thickness
- 18 Steel Reinforced Concrete Studs
- 19 Steel Reinforced Footer Beam
- 20 Concrete Floor

**SPECIAL NOTE:** Items #1, 2, & 15 as well as the joist/flooring system are provided on site per Superior Walls specifications by builder and contractors as an integral part of the Superior Walls foundation system.

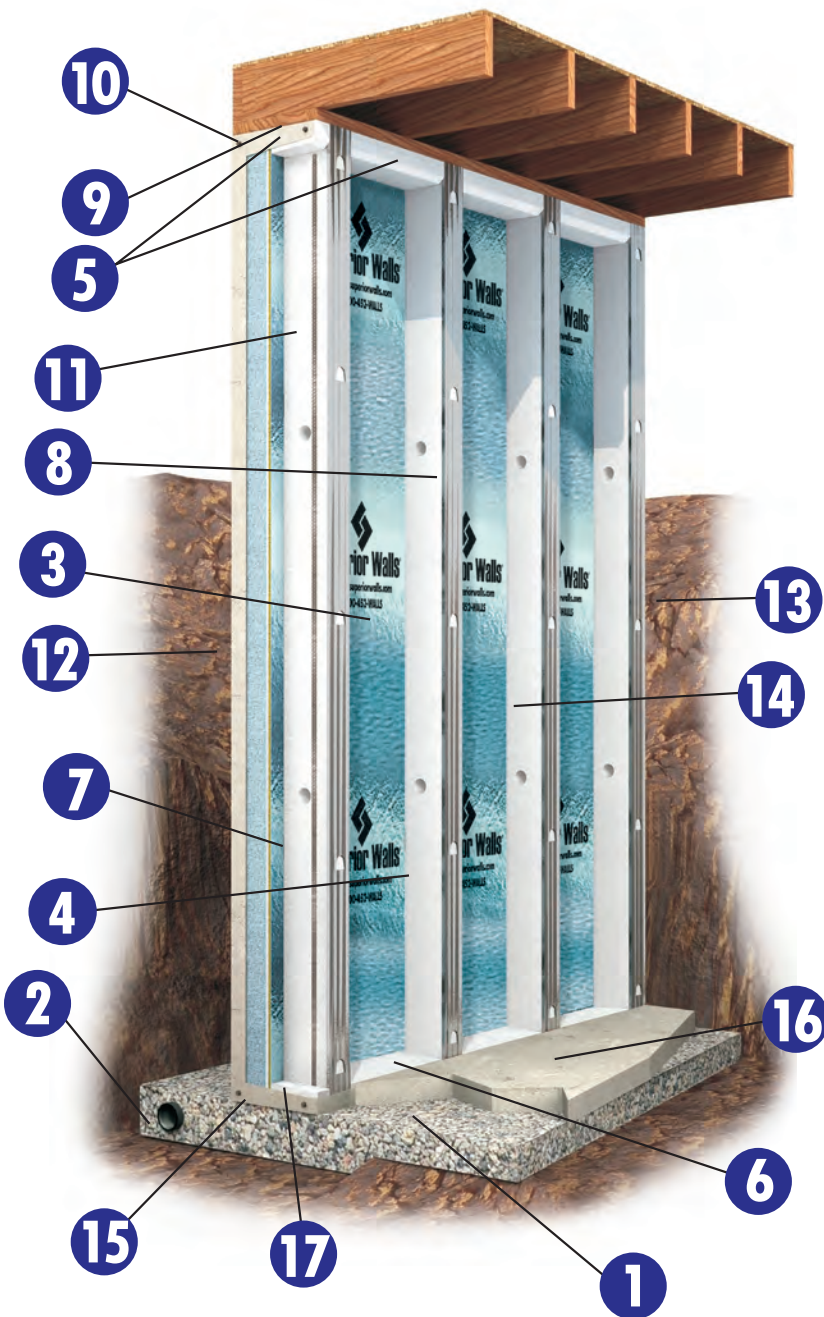
# YEAR-ROUND

VIEW INSTALLATION  
VIDEOS & ONLINE  
PHOTO GALLERY



Xi-15, R15.8

**ZONE 5**  
COMPLIANT



## DRY

YOUR PERMANENT BARRIER AGAINST  
SIDEWALL WATER PENETRATION

- 1 Clean Crushed Stone Footing
- 2 Auxiliary Drain Pipe
- 3 Superior Sealant® Applied in All Joints for Permanent Moisture Barrier

## WARM

WARMER IN WINTER, COOLER IN SUMMER...  
REDUCES YOUR HOME'S ENERGY LOSS

- 3 Polyisocyanurate Insulation Covering Rigid Foam Insulation
- 4 1" Foam Insulated Concrete Studs
- 5 1" Foam Insulation on Bond Beam
- 6 1" Foam Insulation on Footer Beam

## SMART

READY TO FINISH...  
WITH PRE-ENGINEERED ACCESS BUILT-IN

- 7 Access Holes for Ease in Wiring and Plumbing
- 8 Galvanized Steel Stud Facing Ready for Drywall Finishing
- 9 CAD Custom-Designed to Virtually Any Architectural Style
- 10 Laser-Leveled to be Plumb, Level, Square
- 11 Installs on Your Site in Just Hours for Time and Money Savings

## SUPERIOR

CREATED IN A CONTROLLED FACTORY  
ENVIRONMENT TO ENSURE THAT YOUR  
NEW HOME'S FOUNDATION WILL BE BUILT  
TO THE INDUSTRY'S HIGHEST STANDARDS...

- 12 5,000+ PSI Concrete for Superior Strength
- 13 Horizontal Steel Rebar Inside Top and Bottom Beams
- 14 Steel Reinforced Top Bond Beam
- 15 Vertical Steel Rebar (Inside Each Stud)
- 16 1-3/4" Concrete Face Shell
- 17 10-1/4" Overall Wall Thickness
- 18 Steel Reinforced Concrete Studs
- 19 Steel Reinforced Footer Beam
- 20 Concrete Floor
- 21 4" Thick Footer Beam, No Need for Additional Screed Board

**SPECIAL NOTE:** Items #1, 2, & 16 as well as the joist/flooring system are provided on site per Superior Walls specifications by builder and contractors as an integral part of the Superior Walls foundation system.



## EXTRA STRENGTH. EXTRA INSULATION.

- Provided with integral insulation R12.5 or R15.8
- 5000+ PSI concrete reinforced with rebar and polypropylene fibers
- Insulated access holes for wiring and plumbing
- Meets Energy Conservation Code requirements for basement (IECC Chapter 4, IRC Chapter 11)
- Thermally isolated/insulated from exterior
- Insulated corners, studs and bond beam. No concrete exposed on interior.
- Monolithically poured = greater strength
- Galvanized steel stud facing
- Stud cavity allows for additional insulation
- No additional dampproofing required
- Precast openings for windows and doors
- Reduces building time
- Ready in virtually any weather

## SUPERIOR IN EVERY WAY.

### PRODUCT DESCRIPTION

Superior Walls foundations feature patented, insulated, precast concrete wall panels that are formed in a factory-controlled setting and delivered to the job site, where the panels are lifted into position with a crane and carefully bolted together and sealed. The walls are custom-designed and built to virtually any architectural style, complete with window and door openings.

Superior Walls panels are available in a variety of standard heights and custom lengths to suit your project. The maximum axial load (uniform house weight) for this product is 7,500 pounds per linear foot. Special point loads up to 50,000 pounds can be accommodated.

**QUALITY ASSURANCE** Each manufacturing plant is regularly inspected by an independent third-party inspection agency to ensure compliance with the Quality Assurance program. In addition, manufacturing and installation personnel are certified by Superior Walls of America, Ltd.

**DAMP-PROOFING** The concrete used in the Superior Walls wall systems provides protection against freeze/thaw cycles and water vapor transmission. The urethane sealant used between panels provides superior protection against water penetration. Therefore, no additional dampproofing materials are required.

**VAPOR BARRIER** No vapor barrier required. Permeance of the Superior Walls panels have been tested in accordance with ASTM E 96.

**FIRE RESISTANCE** Superior Walls products do not require the attachment of a 15-minute thermal barrier. Ref ICC-ES ESR-1662.

Superior Walls products qualify as a two-hour fire separation wall when two layers or 5/8" Type 'X' drywall are applied to the studs.

## NORTHEAST PRECAST

92 Reese Road  
Millville, NJ 08332

**(866) 699-2557**

[www.northeastprecast.com](http://www.northeastprecast.com)



Superior Walls brand products are manufactured and installed by independently owned and operated factories licensed by Superior Walls of America, LTD.